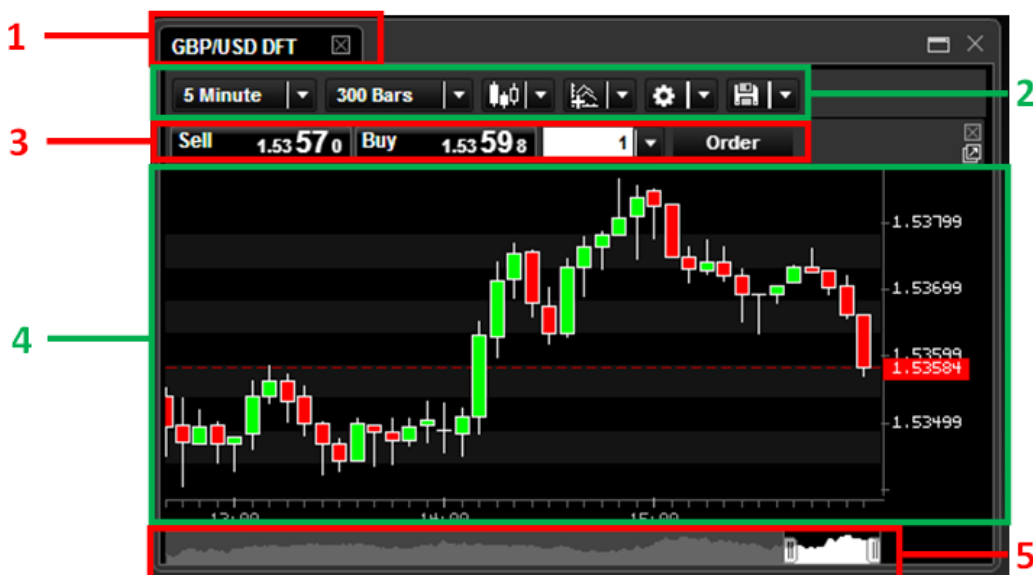


1. Advantage Web Charts

Charts of a particular trading instrument can be opened in a "Chart Window" (below). The charts topic is structured in the following manner to help you find information easily:

- "Chart Window" (below)
- "Chart Crosshair" (on page 4)
- "Chart Window Toolbar" (on page 5)
- "Drawing Toolbar" (on page 8)

1.1 Chart Window



A chart window can be broken down into several different areas of interest.

1. Caption Bar Chart Tab

The chart window can contain more than one chart arranged in tabs. The tabs are displayed in the caption bar of the chart window.

Adding a New Chart Tab

To add a tab into the chart window, left click upon the chart tab to move. Keeping the mouse button pressed, drag the chart into the caption bar of the destination chart window next to the exiting tab(s). A green (+) appears showing where the new tab will be placed. Release the left mouse button and the chart is added into the window as a new tab.

You can now switch between the charts within the same window by clicking on the appropriate tab.

If a window has more than one tab, dragging a tab out of that window into the interface and releasing the left mouse button opens a new chart window containing the tab that was dragged out.

2. Chart Window Toolbar

The chart window toolbar provides quick and easy access to a variety of very useful chart-related commands and access to the "Drawing Toolbar" (on page 8). See the "Chart Window Toolbar" (on page 5) section for more information about the available commands.

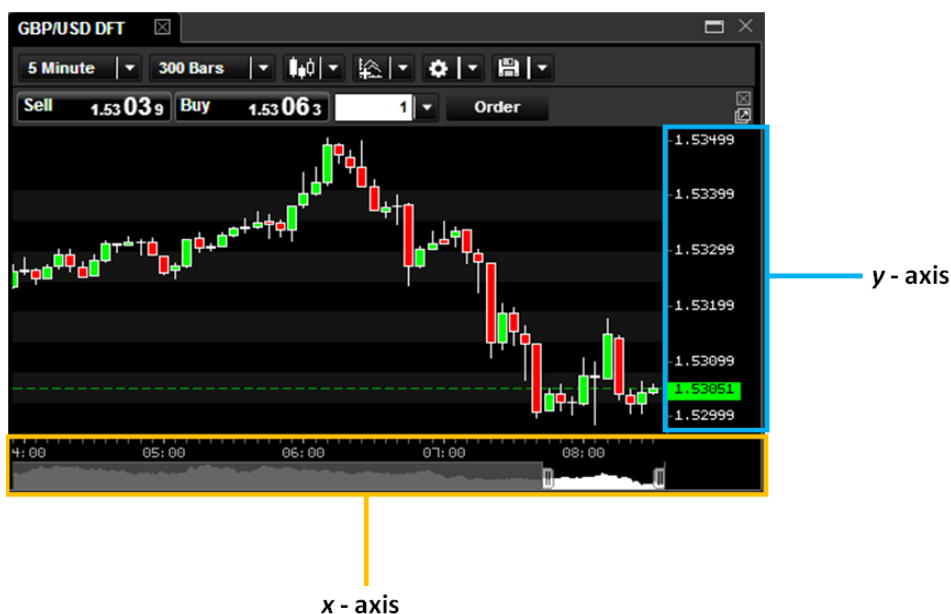
3. Trade Buttons

The trade buttons are enabled by default and can be hidden from display as described in Enable/Disable Display of Trade Buttons. The buttons are used for trading from the chart - see Trading from the Chart.

4. Price Panel

The price panel along with any technical indicator panels show the instrument's price data and the data for any technical indicators. These areas also show many other elements that help define the chart's characteristics and aid in your technical analysis.

Some of the chart's basic visual elements include: the *X-axis* and *Y-axis*, the current price line, and pattern labels.



Y-Axis

The *Y-axis* is located along the right side of the price panel. It shows the instrument's price values.

5. X-Axis

The *X-axis* is located along the bottom of the chart window directly below the price panel. It shows the chart date/time values, and the *X-axis* control bar.

Use the control bar to adjust the price panel zoom and the area of the price series viewed.



The X-axis control is shown as a bar representing the entirety of the instrument price series loaded in the chart. On this time bar are two slider controls. Use right side slider to select the point in time of the price series shown at the farthest right in the price panel. Similarly, use the left slider to select the point in time of the price series shown at the farthest left in the price panel.

The portion of the price series bar being viewed in the price panel is coloured white, whilst all other parts of the price series not being viewed is coloured grey.

The closer together that the left and right buttons are (*narrower the white section*), the higher the zoom in the price panel. Conversely, the farther apart the buttons (*wider white section*), then the lower the zoom.

To view the grey sections of the price series, move the mouse pointer into the white section of the bar. The pointer changes to a cross icon. Left click and whilst holding down the left mouse button move the mouse to the left or right to drag the viewed section along the bar. The price panel updates to show the new sections of the price series.

Chart Crosshair

If you left click and hold the mouse down within the price panel of the chart, a crosshair is displayed. See the "Chart Crosshair" (on page 4) section for more information.

2.1 Chart Crosshair

To display a crosshair, left click and hold the mouse down within the price panel of the chart. A crosshair is displayed together with an information box located at the top left of the price panel.



A label is displayed on the Y-axis to show the price level of the crosshair horizontal line. Similarly, a label is displayed on the X-axis showing the date and time of the crosshair vertical line. These labels update as you move the crosshair within the price panel.

The information box at the top left shows the *Open*, *High*, *Low*, and *Close* prices together with the date/time for the chart data point that the crosshair vertical line is covering. The values update as the crosshair is moved within the price panel.

Releasing the left mouse button removes the crosshair from the chart window.

3.1 Chart Window Toolbar



The chart window toolbar provides quick and easy access to a variety of useful chart-related commands.

1. Time Interval

Expand Content

This is a drop down menu enabling you to select the time interval for the chart. The following time intervals are available:

- 1 Minute
- 2 Minute
- 3 Minute
- 5 Minute
- 10 Minute
- 15 Minute
- 30 Minute
- 1 Hour
- 2 Hour
- 4 Hour
- 8 Hour
- Daily
- Weekly
- Tick

2. Bars To Load

Expand Content

This is a drop down menu enabling you to select the number of bars from the instrument's price series to load and display in the chart. The following options are available:

- 60 Bars
- 90 Bars
- 120 Bars
- 180 Bars
- 240 Bars

-
- 300 Bars
 - 340 Bars
 - 380 Bars
 - 400 - 1000 Bars (in 100 bar increments)

3. Chart Type

Expand Content

This is a selection menu where you can choose the type of chart to display. The following options are available:

- Candlestick
- Line
- HLC Bar (*High, Low, Close*)
- OHLC Bar (*Open, High, Low, Close*)
- Mountain

4. Add Indicator

Expand Content

This is a selection menu where you can select from a choice of indicators to add onto the chart. For each indicator that you select from the drop down menu, the appropriate parameters are shown so you can enter the values you require for that parameter.

Use the **Add to Panel** drop down menu to select whether the indicator is added into the **Main Panel** with the price data, or in a **New Panel** under the main price panel.

5. Configuration Settings

Expand Content

The gear or cog image represents the chart configuration settings menu. You can make the following selections from this menu.

Drawing Toolbar

This is a toggle option that enables or disables the drawing toolbar on the chart. See the "Drawing Toolbar" (on page 8) topic for more information on the drawing tools available.

Add Pattern

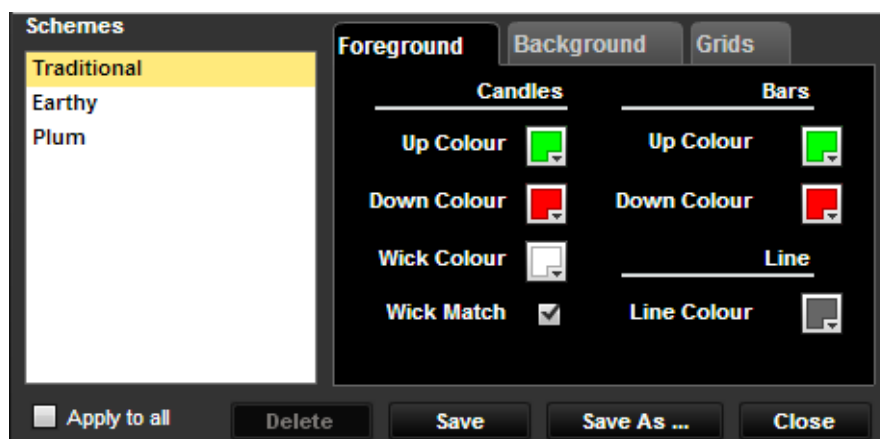
Common patterns in Japanese candlestick charts such as *Hammer* or *Shooting Star* can be automatically identified and highlighted on your charts.

Use the **Add Pattern** option to select the candlestick pattern to be identified and highlighted. The appropriate parameters for each pattern are shown so you can enter the values you require for that parameter.

Clicking on the [?] button next to the **Pattern** drop down menu opens a text description of the pattern, describing how the pattern is identified and what the parameters represent.

Edit Colour Schemes

This option enables you to select a pre-defined chart colour scheme, modify the colours in the pre-defined schemes, or create a new colour scheme.



Select an existing scheme from the **Schemes** selection box on the left of the window. Modify the colour settings in the three tabs **Foreground**, **Background**, and **Grids** on the right.

To create a new colour scheme, click the [**Save As**] button and enter a name for the new colour scheme. Alternatively, click the [**Save**] button to commit the modifications to the selected existing scheme overwriting its previous values. If you tick the **Apply To All** checkbox, then the colour modifications are saved to *all* the existing colour schemes.

The [**Delete**] command removes the selected colour scheme.

Selectable Colour Schemes

The currently defined colour schemes are listed at the bottom of the menu. You can quickly switch between schemes by selecting the one you want from this list.

6. Profiles

Expand Content

The [**Profiles**] button (*disk icon*) enables you to save and load chart profiles onto the current chart. Chart profiles store the exact appearance, market and indicators used, so that you can quickly apply them to a chart. See Chart Profiles for more information on using chart profiles.

4.1 Drawing Toolbar

When enabled from the chart toolbar configuration settings, the *Drawing Toolbar* appears as a floating toolbar at the far left of the chart window. It can be moved within the chart so that it does not occlude chart elements of interest.



1. Pointer

This button returns the pointer to the default arrow pointer. It is automatically activated after using another drawing tool.

2. Line

A selection menu offering the following tools: **Line** and **Snapping Trend Line**.

Line

Select this tool to draw a trend line between two price data points on the chart.

When this tool is selected, position the pointer in the active chart window over the first data point, left click and hold the mouse button down. Move the mouse pointer to the second data point and release the left mouse button. The trend line is automatically drawn between the two points.

An information box appears at the top left of the chart window denoting the line you have just drawn. To remove the line, click the [X] in this information box.

Snapping Trend Line

This tool is similar to the **Line** tool, except that both data points on the line snap to the Open, High, Low, or Close of a price bar at your choice.

3. Parallel Line

A selection menu offering the following tools: **Parallel Line** and **Snapping Parallel Line**.

Parallel Line

Select this tool to draw a trend line and accompanying parallel line.

With this tool selected, position the pointer over a location in the active chart window to start the line drawing. Once a starting position is selected you must click and hold down the left mouse button while drawing the line on the chart.

When you release the mouse button a parallel line appears near the trend line you have drawn. You can drag the parallel line closer or farther away from the trend line. The parallel line is then fixed at this new position on the chart.

An information box appears at the top left of the chart window denoting the parallel lines you have drawn. To remove the line, click the [X] in this information box.

Snapping Parallel Line

This tool is similar to the **Parallel Line** tool, except that the data points on the trend line snap to the Open, High, Low, or Close of a price bar at your choice.

4. Shapes

A selection menu offering the following shape tools: **Rectangle**, **Ellipse**, and **Triangle**.

With the required shape tool selected, position the pointer over a location in the active chart window to start drawing the shape. Once a starting position is selected you must click and hold down the left mouse button whilst drawing the shape on the chart.

An information box appears at the top left of the chart window denoting the shape you have drawn. To remove the shape, click the [X] in this information box.

5. Horizontal Line

Select this tool to draw a horizontal line in the active chart window.

With this tool selected, position the pointer over a location in the active chart window to draw the horizontal line. Once a location is chosen you must click the left mouse button to draw the line in the chart window.

An information box appears at the top left of the chart window denoting the horizontal line you have just drawn. To remove the line, click the [X] button in this information box.

6. Horizontal Support & Resistance Line

This tool works in exactly the same manner as the horizontal line tool. The only difference is that at the leftmost edge of the line, the exact price value is displayed to better highlight the price support or resistance point.

7. Fibonacci Arc

Select this tool to draw a Fibonacci arc in the active chart window.

With this tool selected, position the pointer over a location in the active chart window to draw the Fibonacci arc. Once a location is selected, click and hold down the left mouse button to draw the arc in the chart window.

An information box appears at the top left of the chart window denoting the Fibonacci arc. To remove the Fibonacci arc, click the [X] button in this information box.

8. Fibonacci Fan

Select this tool to draw a Fibonacci fan in the active chart window.

With this tool selected, position the pointer over a location in the active chart window to draw the Fibonacci fan. Once a location is selected, click and hold down the left mouse button to draw the fan in the chart window.

An information box appears at the top left of the chart window denoting the Fibonacci fan. To remove the Fibonacci fan, click the [X] button in this information box.

9. Fibonacci Retracement

Select this tool to draw a Fibonacci retracement in the active chart window.

With this tool selected, position the pointer over a location in the active chart window to draw the retracement. Once a location is selected, click and hold down the left mouse button to draw the retracement in the chart window.

An information box appears at the top left of the chart window denoting the Fibonacci retracement. To remove the Fibonacci retracement, click the [X] button in this information box.

10. Standard Deviation Channel

Select this tool to draw a standard deviation channel in the active chart window.

With this tool selected, you must position the pointer over a location in the active chart window to start the calculation of the standard deviation channel. Once a starting position is selected you must click and hold down the left mouse button while drawing the standard deviation channel on the chart.

An information box appears at the top left of the chart window denoting the standard deviation channel. To remove the standard deviation channel, click the [X] button in this information box.

11. Arrow Tool

This tool draws an arrow onto the active chart window.

Select this tool then position the mouse pointer at the chart location where you want the arrow to appear then left click. An arrow is drawn pointing to the right. To change the direction the arrow points:

1. Move the mouse pointer over the dot at the base of the arrow until it changes to a rotation symbol then hold down left click.
2. Move the mouse to rotate the arrow so that it points in the direction you require.
3. Release the left click and then click upon any blank area of the chart to finalise the arrow direction.

An information box appears at the top left of the chart window denoting the arrow just drawn. To remove the arrow, click the [X] button in this information box.

12. Text Tool

Use this tool to add text boxes with annotations for particular areas of interest onto a chart.

Select this tool then position the mouse pointer at the chart location where you want the text to appear then left click. A text box appears with a blinking text cursor. You can reposition the text box by clicking upon the square block at the top left of the text box then dragging to the desired position.

Type in your text annotation then click upon any blank area of the chart to finalise the text annotation.

13. Colour Selection Grid

The colour selection grid button shows the currently selected colour. This colour is applied to any objects drawn when using the *Drawing Toolbar*.

Clicking on the button opens a colour grid showing all available colours that you can select. Select a colour from this grid and all new objects drawn will use the new colour.

